

# **User's Guide of V59 TV Controller Board**

V1.1

2014-04-09

ELECREALM

<http://www.elecrealm.com/>

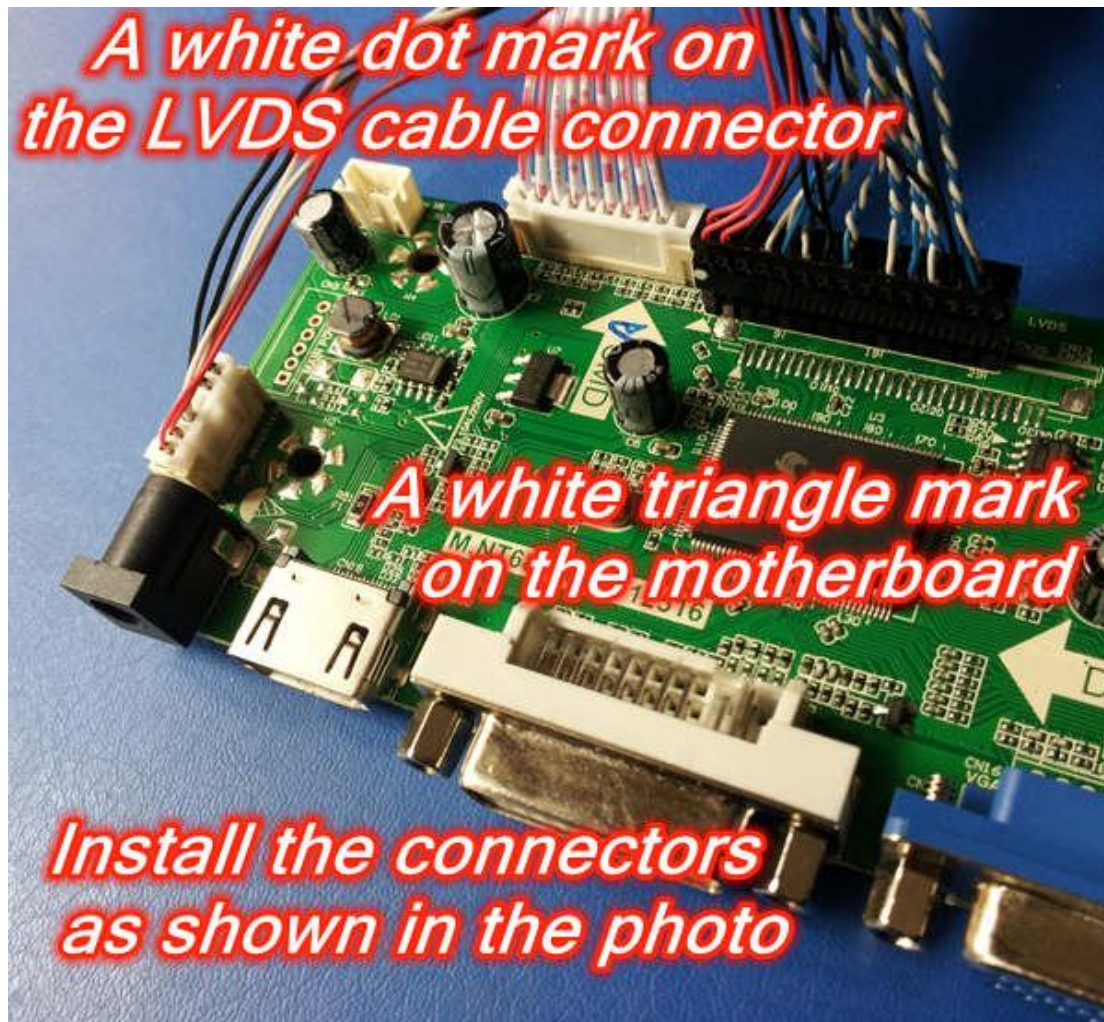


## **Content**

Chapter 1--LVDS Cable Connection .....	2
Chapter 2--Voltage Jumper .....	5
Chapter 3--Refresh firmware.....	6
Chapter 4--Enter into Factory Mode and set LVDS Map number .....	11
Chapter 5--Mirror the image upside down.....	18
Chapter 6--Change the input source via remote controller.....	20
Chapter 7--Change the input source via keyboard .....	22
Chapter 8--Troubleshooting.....	26



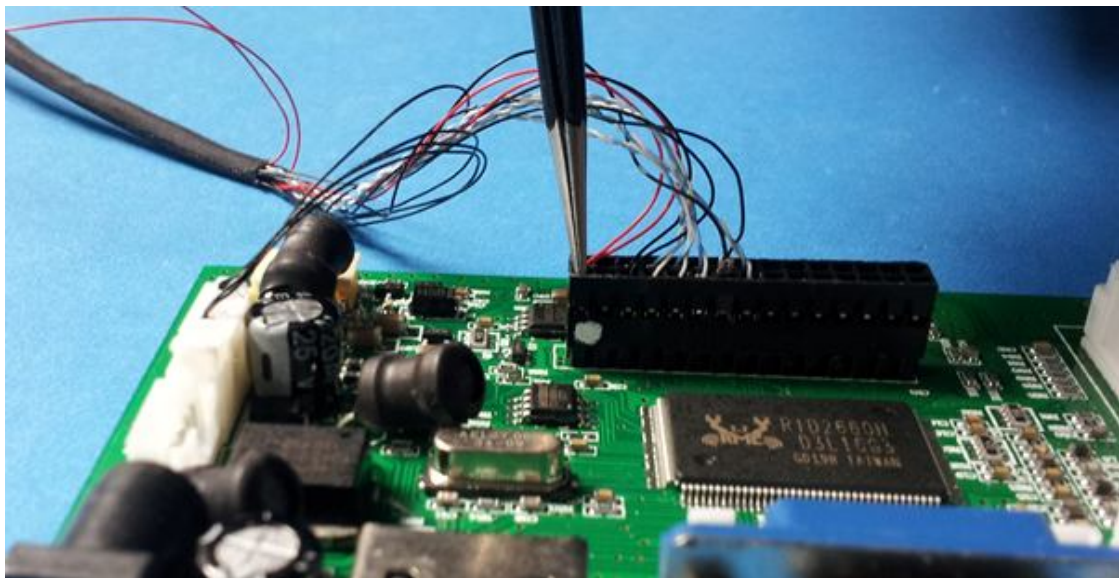
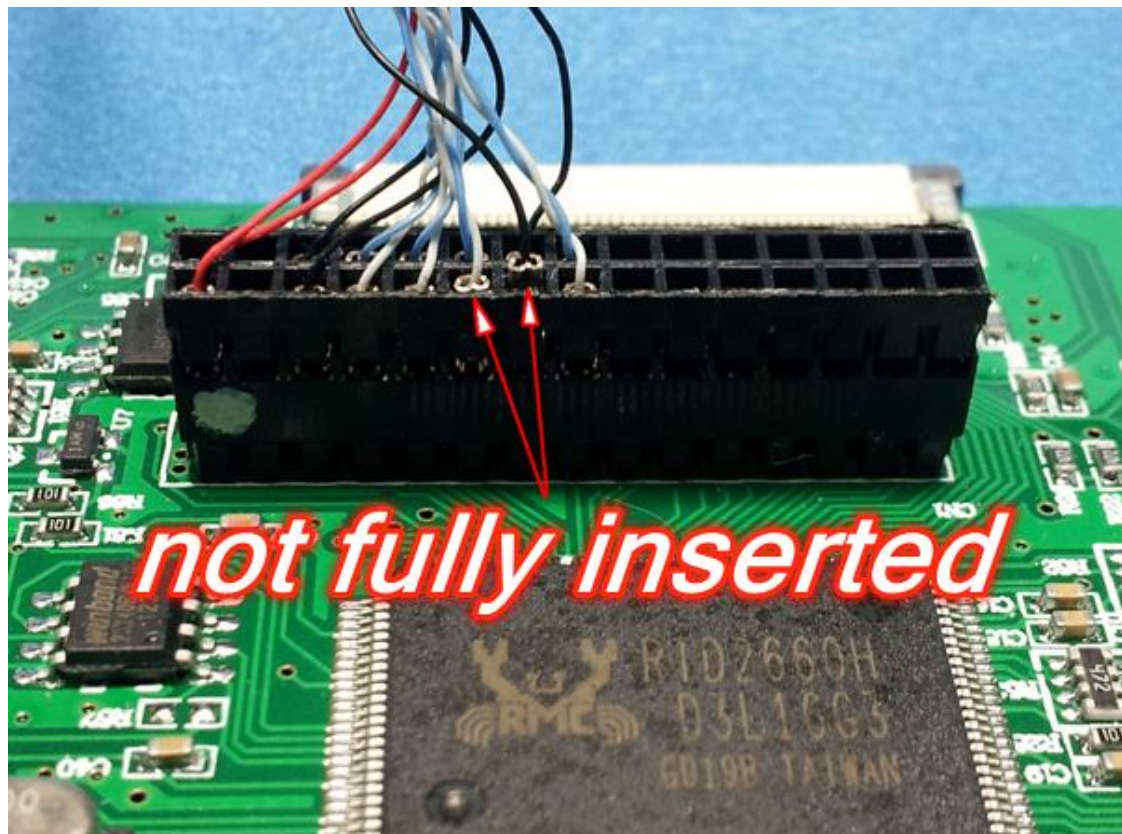
## Chapter 1--LVDS Cable Connection



Please check the inserting condition of each foot. If some foot is not fully inserted (as shown in the figure below), please use tweezers to press the exposure to the top of the foot, let all feet be inserted into well.



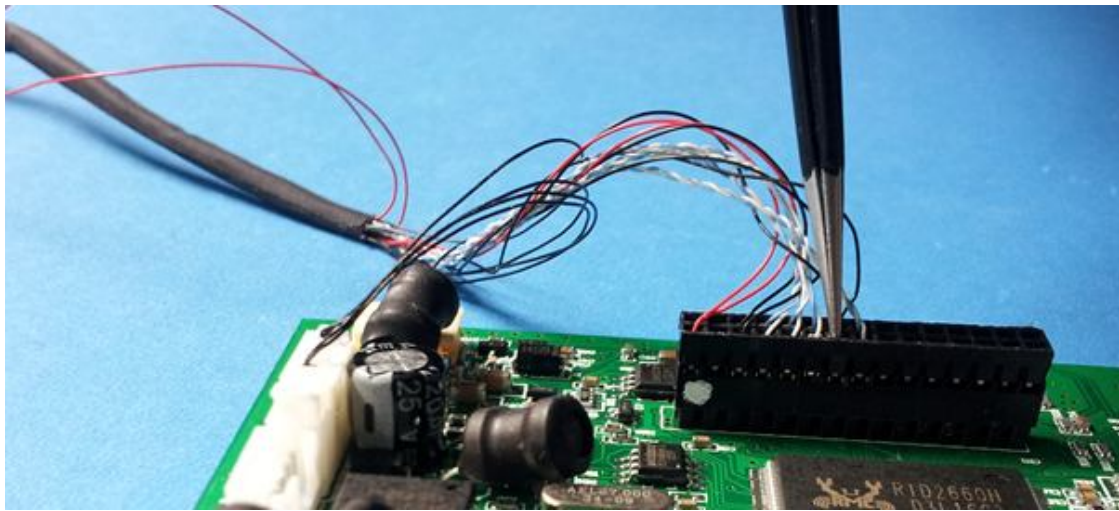
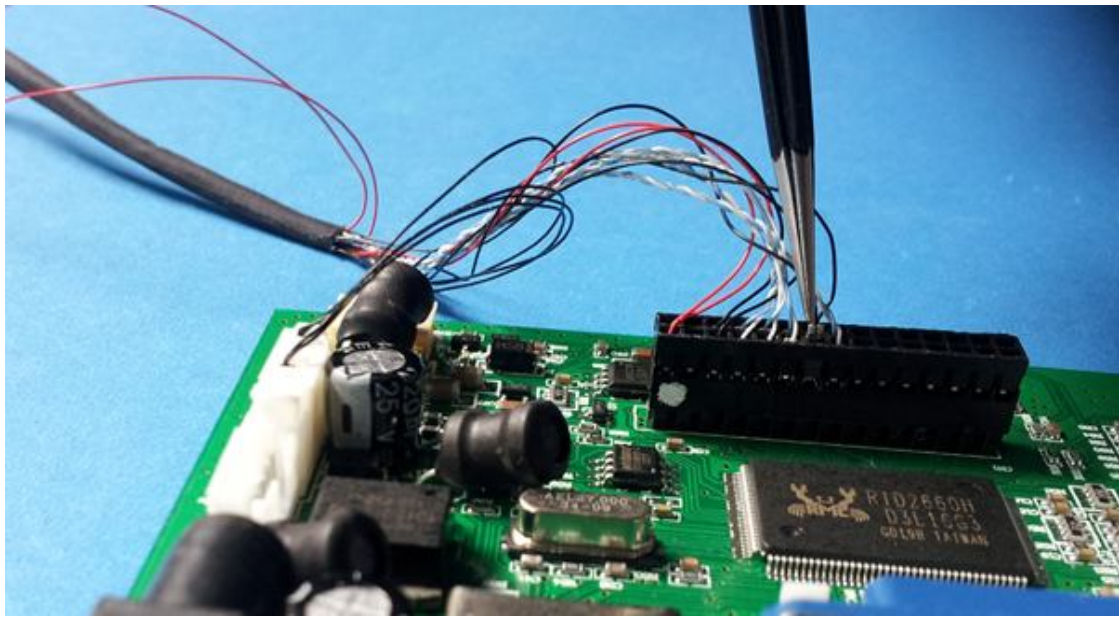
<http://stores.ebay.com/elecrealm/>







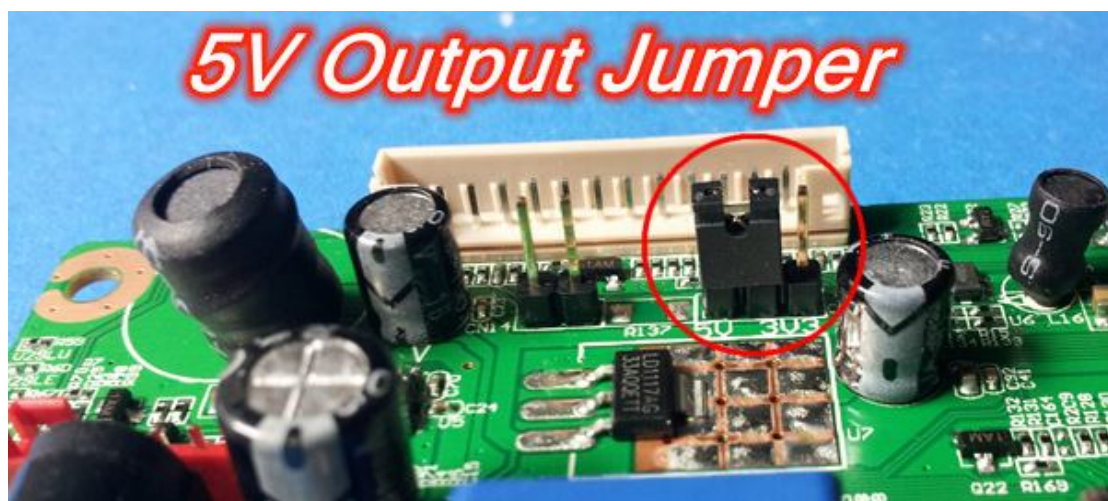
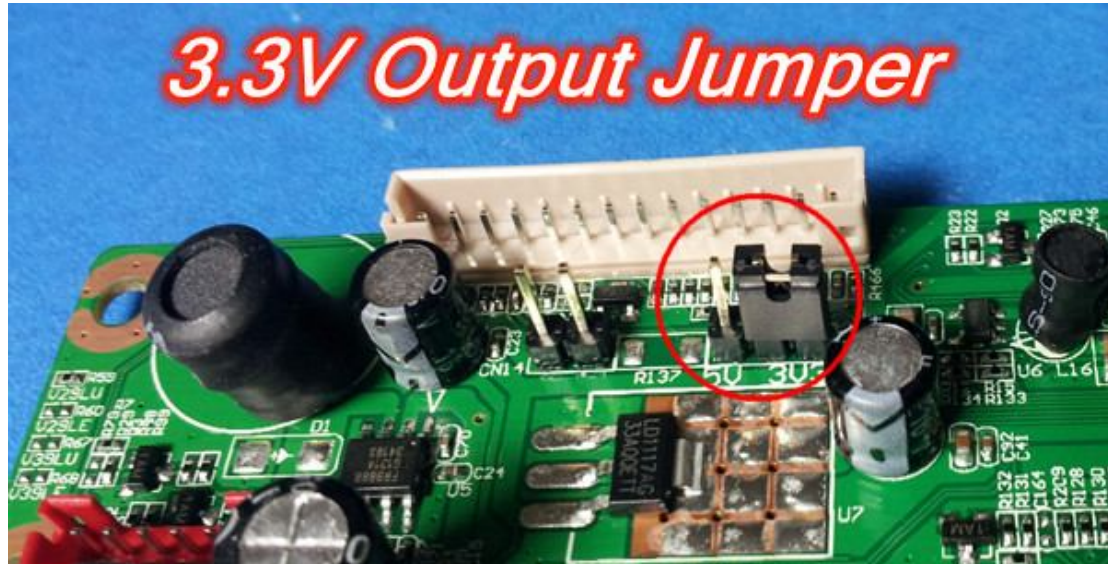
<http://stores.ebay.com/electrealm/>





<http://stores.ebay.com/elecrealm/>

## Chapter 2--Voltage Jumper







<http://stores.ebay.com/elecrealm/>

## Chapter 3--Refresh firmware

1. Please Prepare USB 2.0 Flash Memory Driver disk.



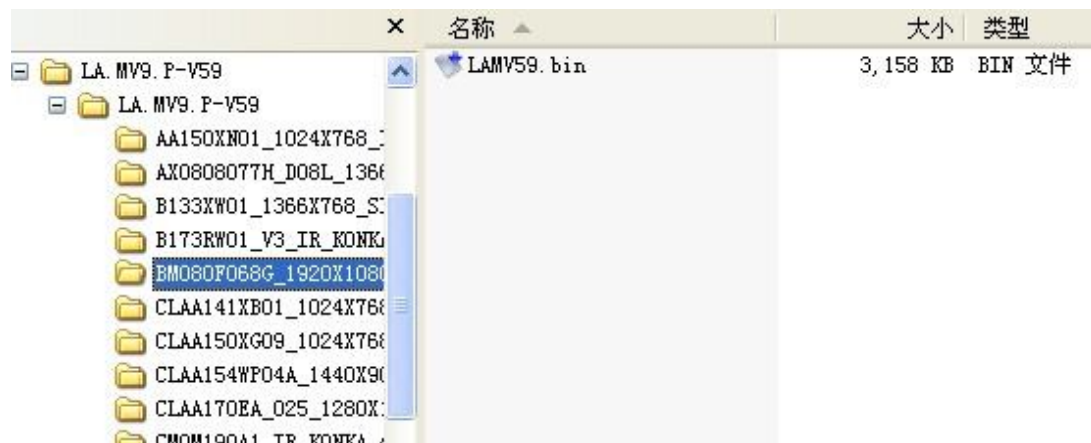
2. Please select the suitable firmware according to the resolution of your LCD panel.



<http://stores.ebay.com/elecrealm/>

```
LA_MV59_P_1920x1080_5key
LA_MV59P_0x8599_1440X900_20130108165555
LAMV59_P_PNL_B089AW01_1024X768_5KEY_IR_MEIKE_KEYPAD_TYPE_HX_DJJ_LL130108
LAMV59_P_PNL_B133XW01_1366X768_SI6L_3V_5KEY_IR_MEIKE_KEYPAD_TYPE_HX_DJJ_LL130108
LAMV59_P_PNL_E185SG01_CMI_5KEY_IR_MEIKE_KEYPAD_TYPE_HX_DJJ_LL130108
LAMV59_P_PNL_HSD173PUW1_1920X1080_D06L_5KEY_IR_MEIKE_KEYPAD_TYPE_HX_DJJ_LL130108
LAMV59_P_PNL_HT215F01_100_1920X1080_D08L_5KEY_IR_MEIKE_KEYPAD_TYPE_HX_DJJ_LL13...
LAMV59_P_PNL_IXG77C_1024X768_SI6L_5KEY_IR_MEIKE_KEYPAD_TYPE_HX_DJJ_LL130108
LAMV59_P_PNL_LK315T3LA57_1366x768_5KEY_IR_MEIKE_KEYPAD_TYPE_HX_DJJ_LL130108
LAMV59_P_PNL_LK370T3LZ53_1366x768_12V_5KEY_IR_MEIKE_KEYPAD_TYPE_HX_DJJ_LL130108
LAMV59_P_PNL_LM150X07_1024X768_SI8L_3V_5KEY_IR_MEIKE_KEYPAD_TYPE_HX_DJJ_LL130108
LAMV59_P_PNL_LM150X07_1024X768_SI8L_5KEY_IR_MEIKE_KEYPAD_TYPE_HX_DJJ_LL130108
LAMV59_P_PNL_LM170E01_1280X1024_D08L_5V_5KEY_IR_MEIKE_KEYPAD_TYPE_HX_DJJ_LL130108
LAMV59_P_PNL_LM215DA_T01_1920X1080_5KEY_IR_MEIKE_KEYPAD_TYPE_HX_DJJ_LL130108
LAMV59_P_PNL_LM215DB_T02_1920X1080_D08L_5V_5KEY_IR_MEIKE_KEYPAD_TYPE_HX_DJJ_LL...
LAMV59_P_PNL_LP315T0_1366X768_SI8L_12V_5KEY_IR_MEIKE_KEYPAD_TYPE_HX_DJJ_LL130108
LAMV59_P_PNL_LQ150X1LGC2_1024X768_5KEY_IR_MEIKE_KEYPAD_TYPE_HX_DJJ_LL130108
LAMV59_P_PNL_LQ150X1LGN1A_1024X768_SI6L_3V_5KEY_IR_MEIKE_KEYPAD_TYPE_HX_DJJ_LL...
LAMV59_P_PNL_LQ150X1LGN2A_1024X768_5KEY_IR_MEIKE_KEYPAD_TYPE_HX_DJJ_LL130108
LAMV59_P_PNL_LTM220_WUXGA_D08L_5V_5KEY_IR_MEIKE_KEYPAD_TYPE_XSC_XKK_LL130108
LAMV59_P_PNL_LTM_1440x900_5KEY_IR_MEIKE_KEYPAD_TYPE_HX_DJJ_LL130108
LAMV59_P_PNL_LTN141P2_L01_1400X1050_D06L_3V_5KEY_IR_MEIKE_KEYPAD_TYPE_HX_DJJ_L...
LAMV59_P_PNL_LTN170CT02_1920X1200_5KEY_IR_MEIKE_KEYPAD_TYPE_HX_DJJ_LL130108
LAMV59_P_PNL_LTY400HA06_1920x1080_5KEY_IR_MEIKE_KEYPAD_TYPE_HX_DJJ_LL130108
```

3. Please copy the firmware to the USB 2.0 Flash Memory Driver disk.  
Make sure it only has one firmware file that you need refresh.

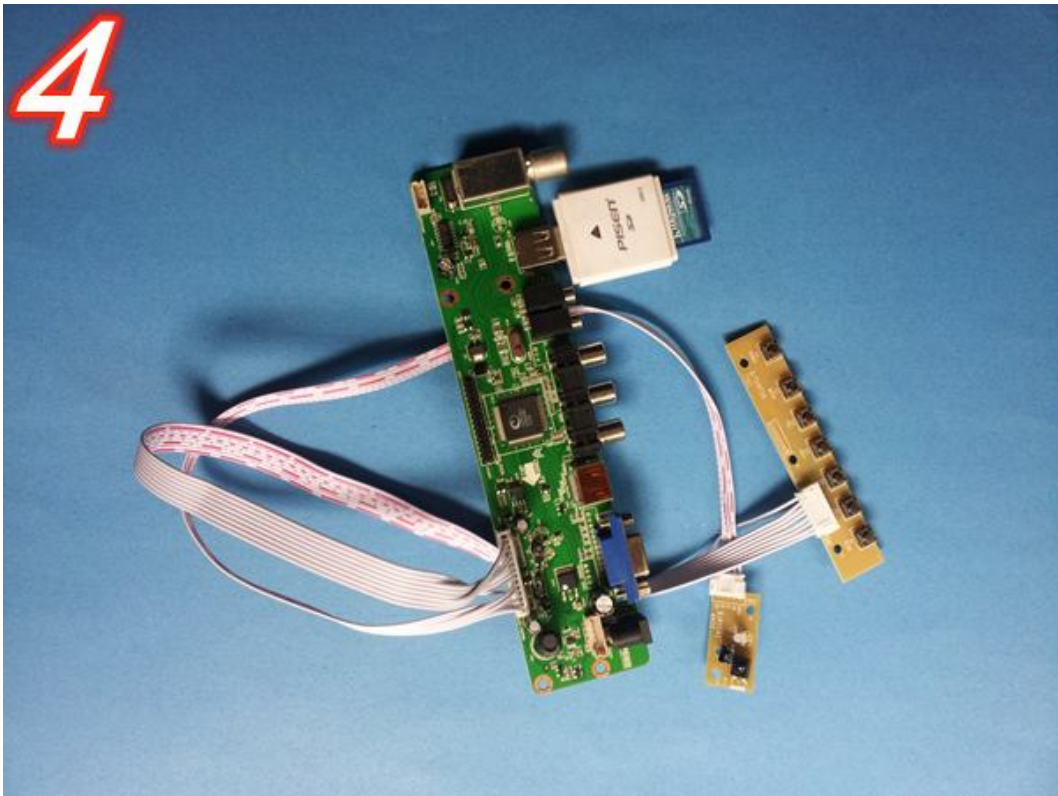


4. Plug in USB 2.0 Flash Memory Driver disk to the USB port of controller Board.

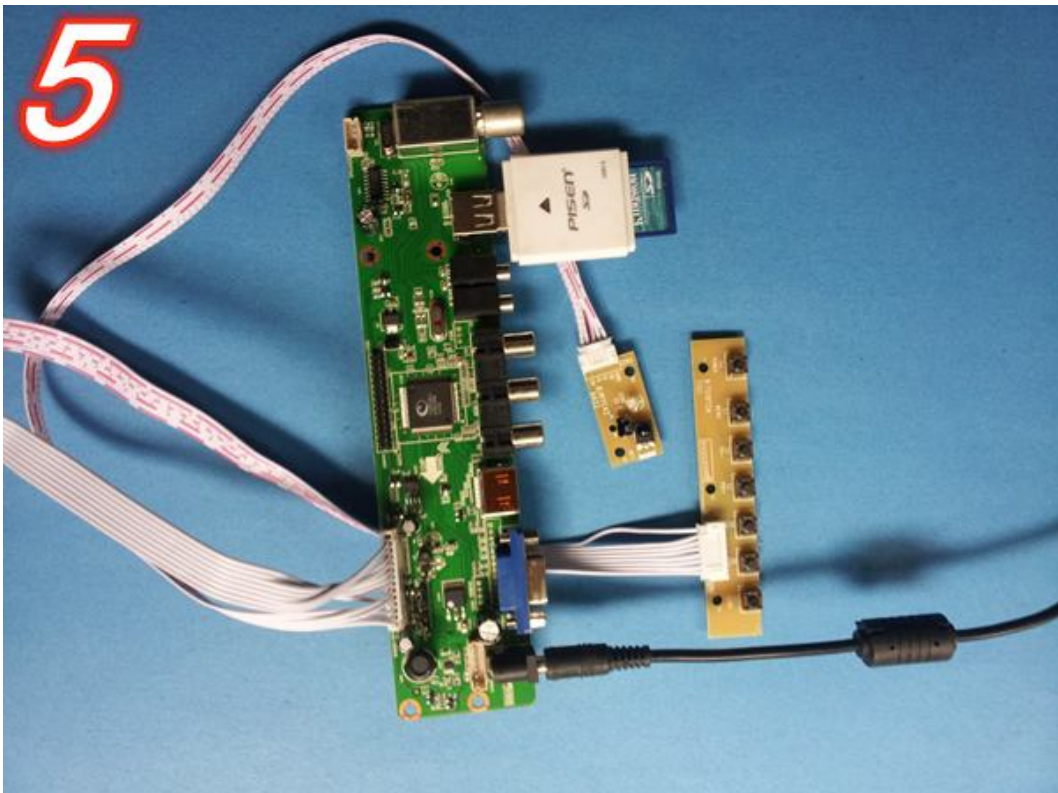




<http://stores.ebay.com/elecrealm/>



5. Plug in 12V DC Power Supply.

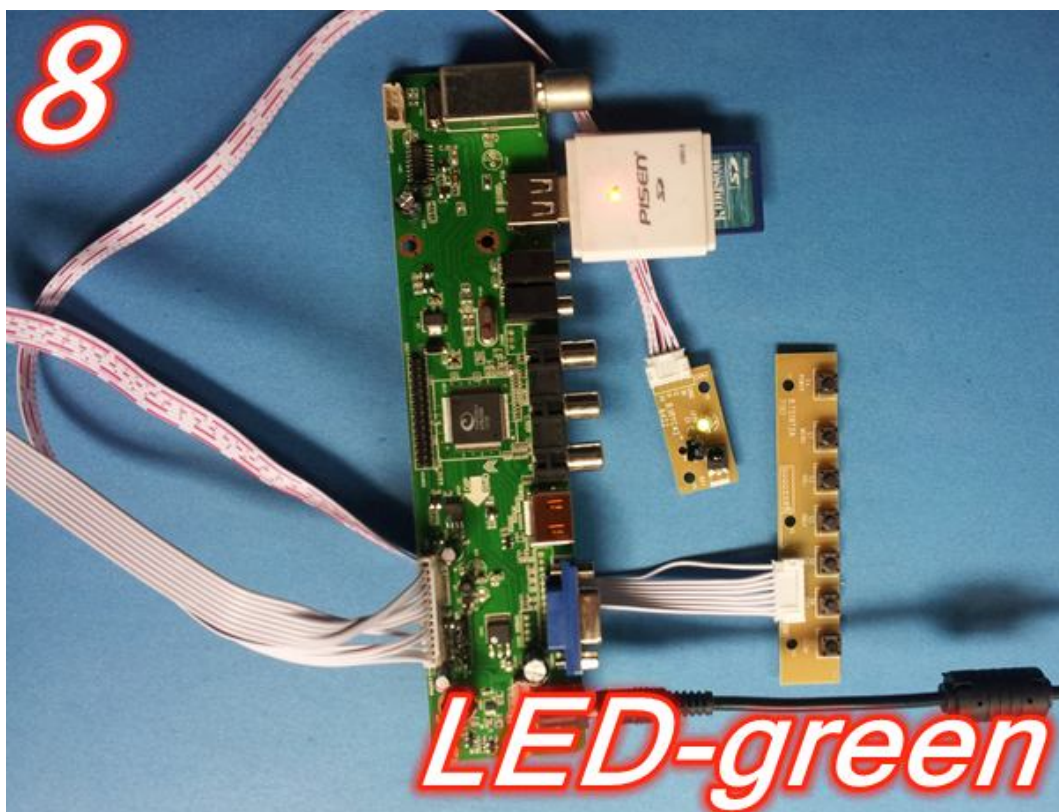
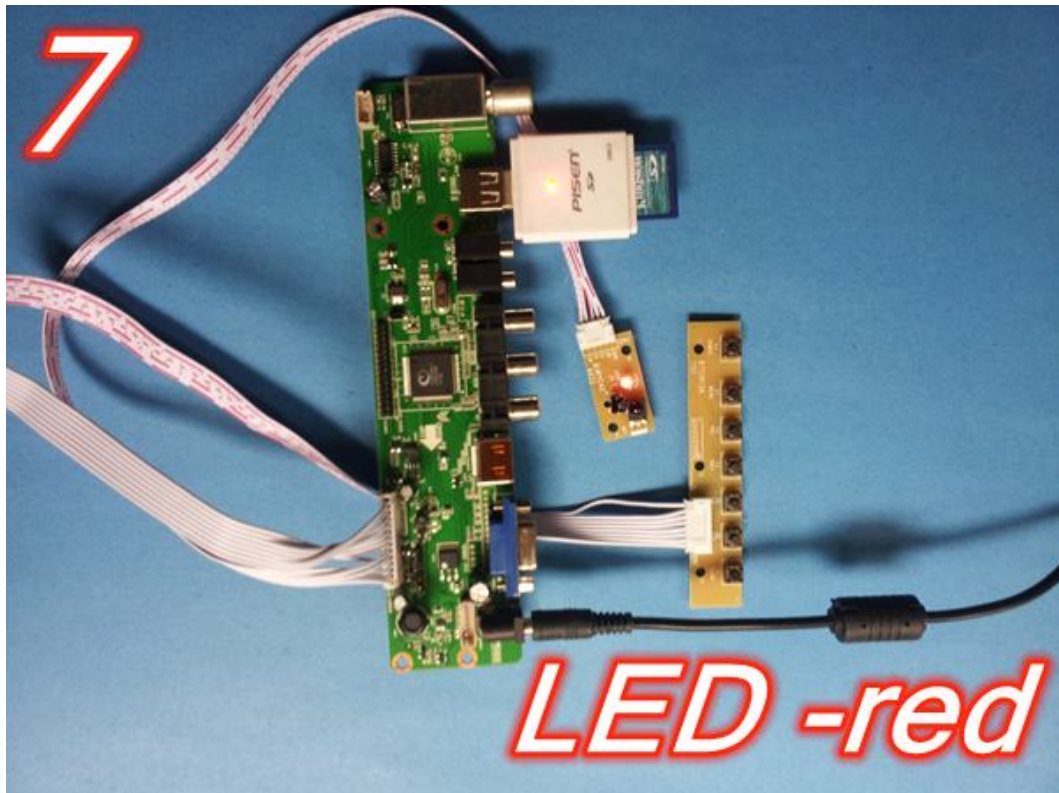


6. Wait a moment. You will see the Led becomes red and then becomes green. The Led will be flicker between red and green. The LED light



<http://stores.ebay.com/elecrealm/>

is always in the blue after finishing the refresh of the firmware.



7. Unplug the power supply from the driver board. Then connect the



<http://stores.ebay.com/elecrealm/>

---

LVDS cable and the LCD panel. Then plug the power to the power input again. Turn on the power by keyboard or Remote controller.

8. Then you will see the controller board can work with the LCD panel.





## Chapter 4--Enter into Factory Mode and set LVDS Map number

If the LCD panel displays the image as below, the LVDS map should be changed. The operation only can be finished via the remote controller.



1. Press the “menu” button on the remote controller.



<http://stores.ebay.com/elecrealm/>



2. Then press number “1” “1” “4” “7” .







<http://stores.ebay.com/elecrealm/>







<http://stores.ebay.com/electrealm/>



3. The LCD panel will display the following image:



4. Press “up/down” on the remote controller so that the cursor moves to “LVDS Map”.



<http://stores.ebay.com/elecrealm/>

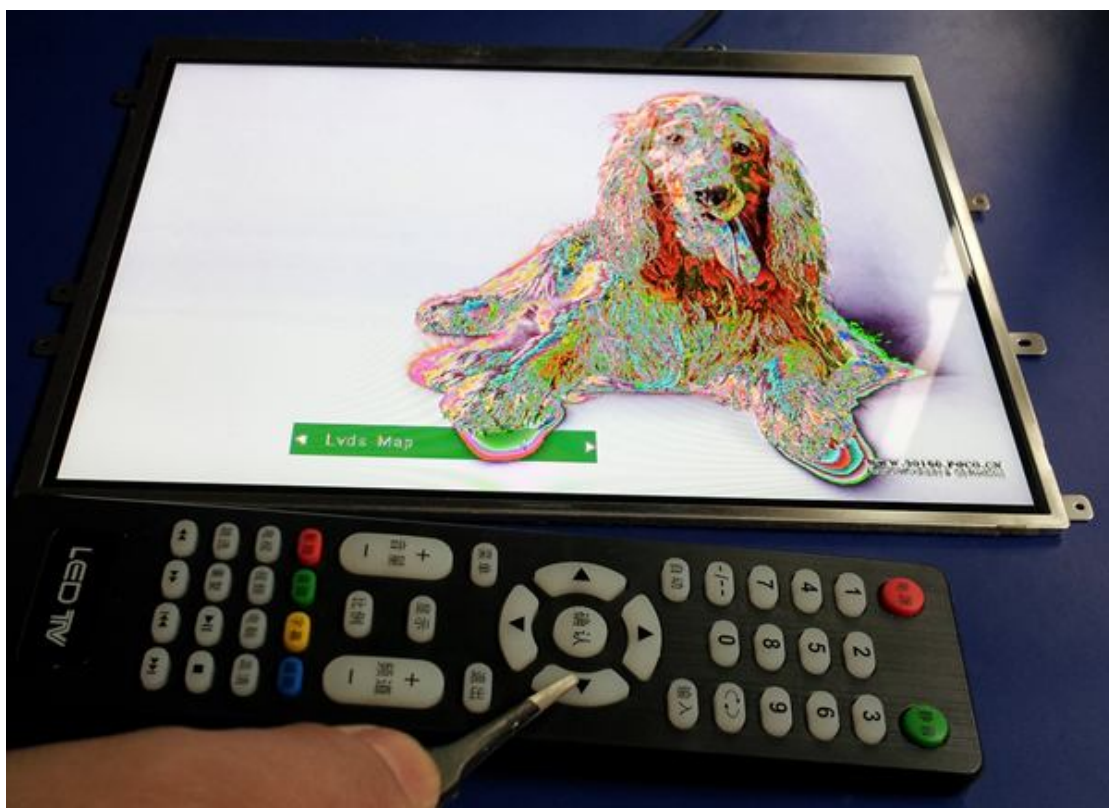


5. Press “left/right--right” and go into LVDS Map. Then press “left/right” and change the LVDS Map number to the proper number, the LCD panel will go to the normal picture.





<http://stores.ebay.com/elecrealm/>







<http://stores.ebay.com/electrealm/>





<http://stores.ebay.com/elecrealm/>

## Chapter 5--Mirror the image upside down

Please enter into "Factory setting" by referring to images in Chapter 4 first.

Then change the "MirrorEnable" value between "ON/OFF" by referring to the following images.

In order to rotate the image 180 degrees, please turn off the power and then turn on it after changing "MirrorEnable" value from ON to OFF or from OFF to ON.





<http://stores.ebay.com/elecrealm/>







<http://stores.ebay.com/elecrealm/>

## Chapter 6--Change the input source via remote controller





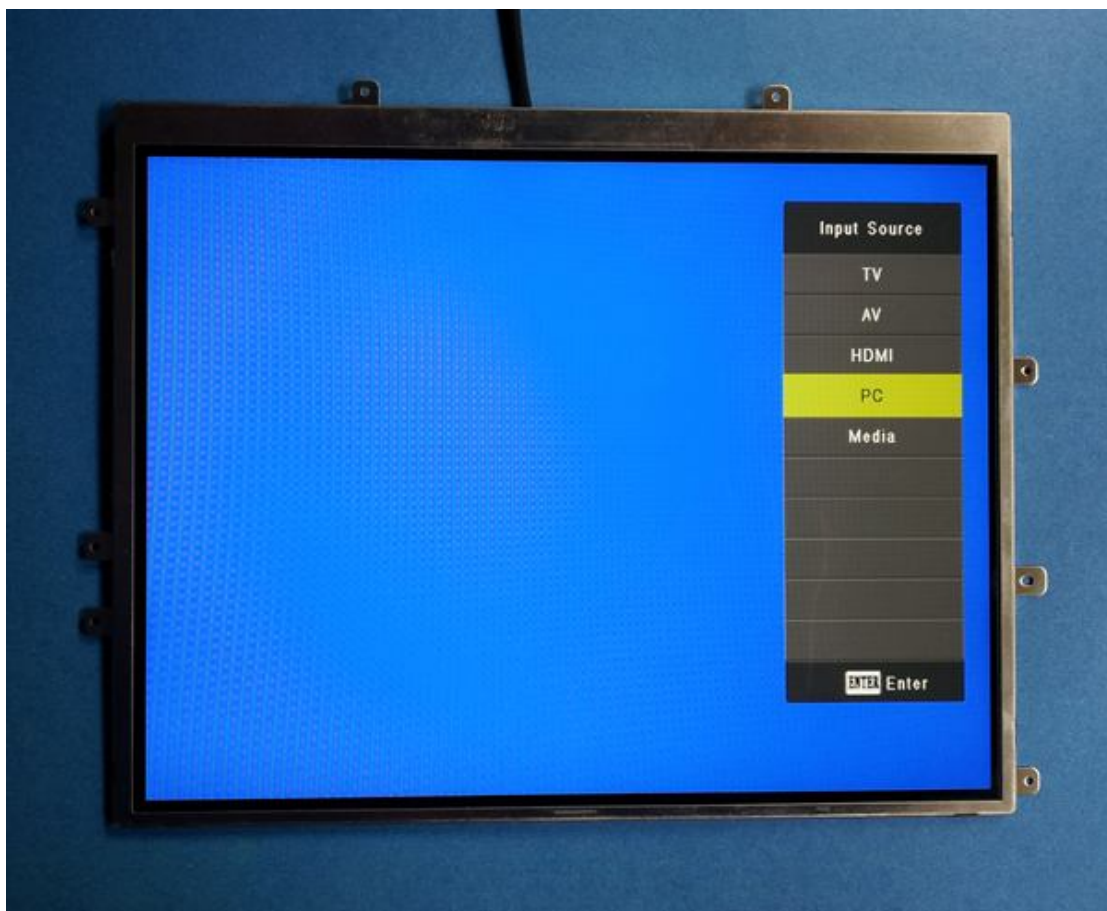
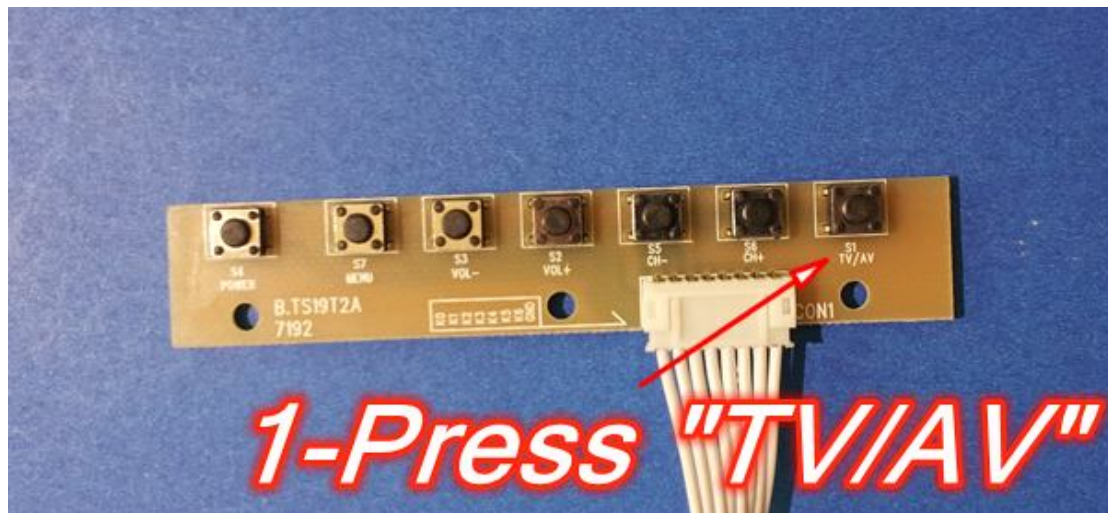
<http://stores.ebay.com/elecrealm/>





<http://stores.ebay.com/electrealm/>

## Chapter 7--Change the input source via keyboard





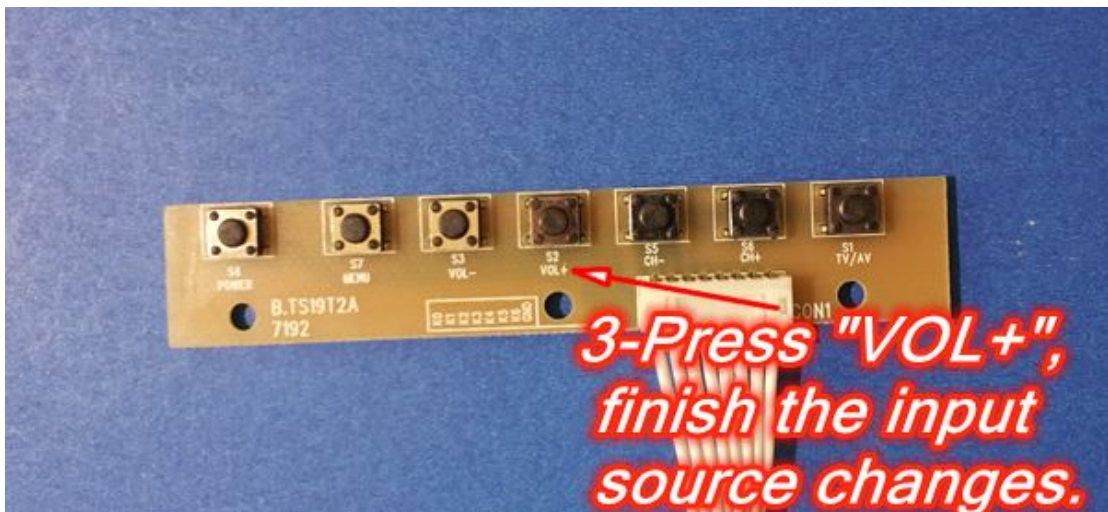
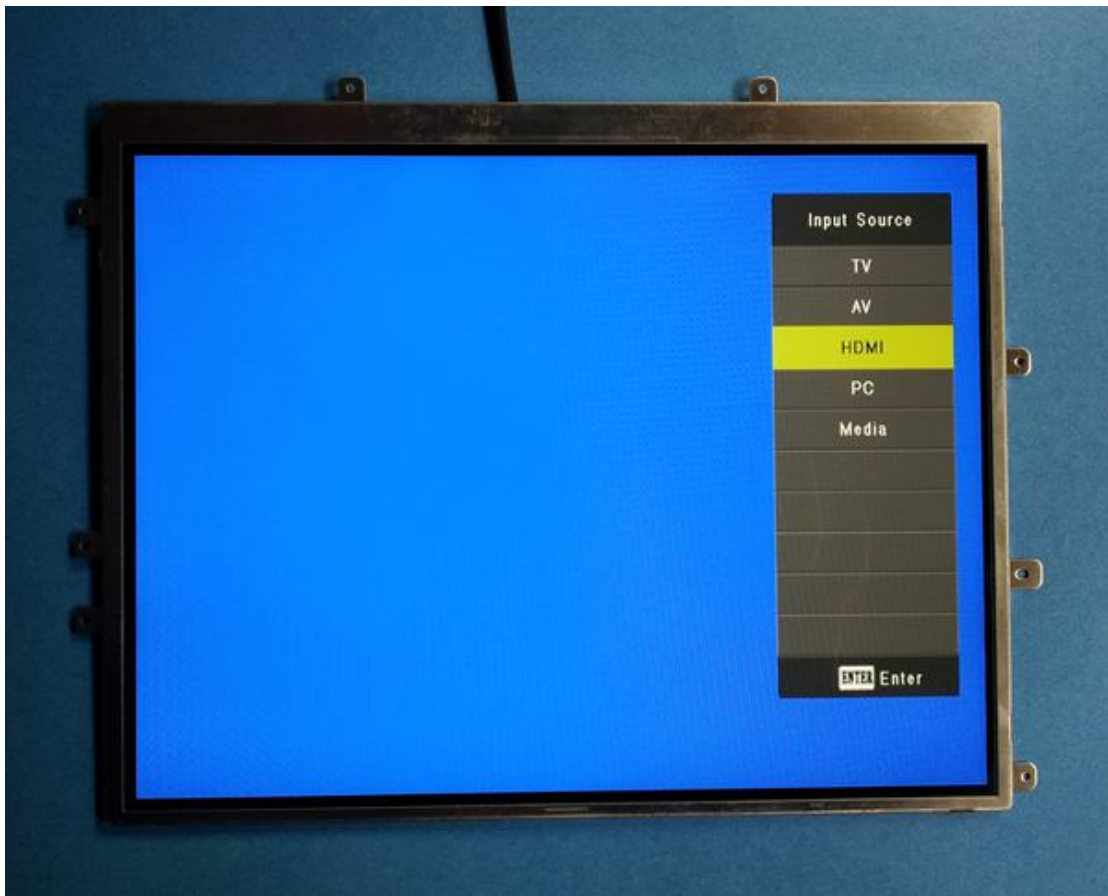


<http://stores.ebay.com/elecrealm/>





<http://stores.ebay.com/elecrealm/>





<http://stores.ebay.com/electrealm/>







## Chapter 8--Troubleshooting

### Question 1 – The power adapter requirement of the board.

<b>POWER</b>	Requirement	12V DC/12V(built)/12V,5V(built in)/12V,5V,5VSB(built in)
	To Panel	3.3V/5V/12V
	Management	Standby Power Consumption < 0.5W(Board Only)

The board voltage and the LCD voltage are 2 different parameters.

The board can be worked from +5V to +12V with 3.0A current.

### Question 2 – The LCD panel voltage

The LCD voltage only can be supplied by the board's jumper with only +3.3V +5.0V +12.0V. Most of LCD panel works at +3.3V. Normally, the board's jumper has been jumped to +3.3V and please don't jump it again. Or else, the LCD will be damaged at +5.0V/+12.0V.

### Question 3 – How to confirm all the connections are in good condition.

First of all, please do not input any signal cable.

Then power on the board via keyboard power ON/OFF button.

The following image can be shown on the LCD. That means the board kits and LCD are in good condition. Then you can start use it via plugging in the signal cable.



<http://stores.ebay.com/elecrealm/>



If the blue image isn't shown on the LCD, there should be problems and please don't connect the signal cable to the board in order to save time. Please check the board power, the LVDS cable connection to board and to the LCD.